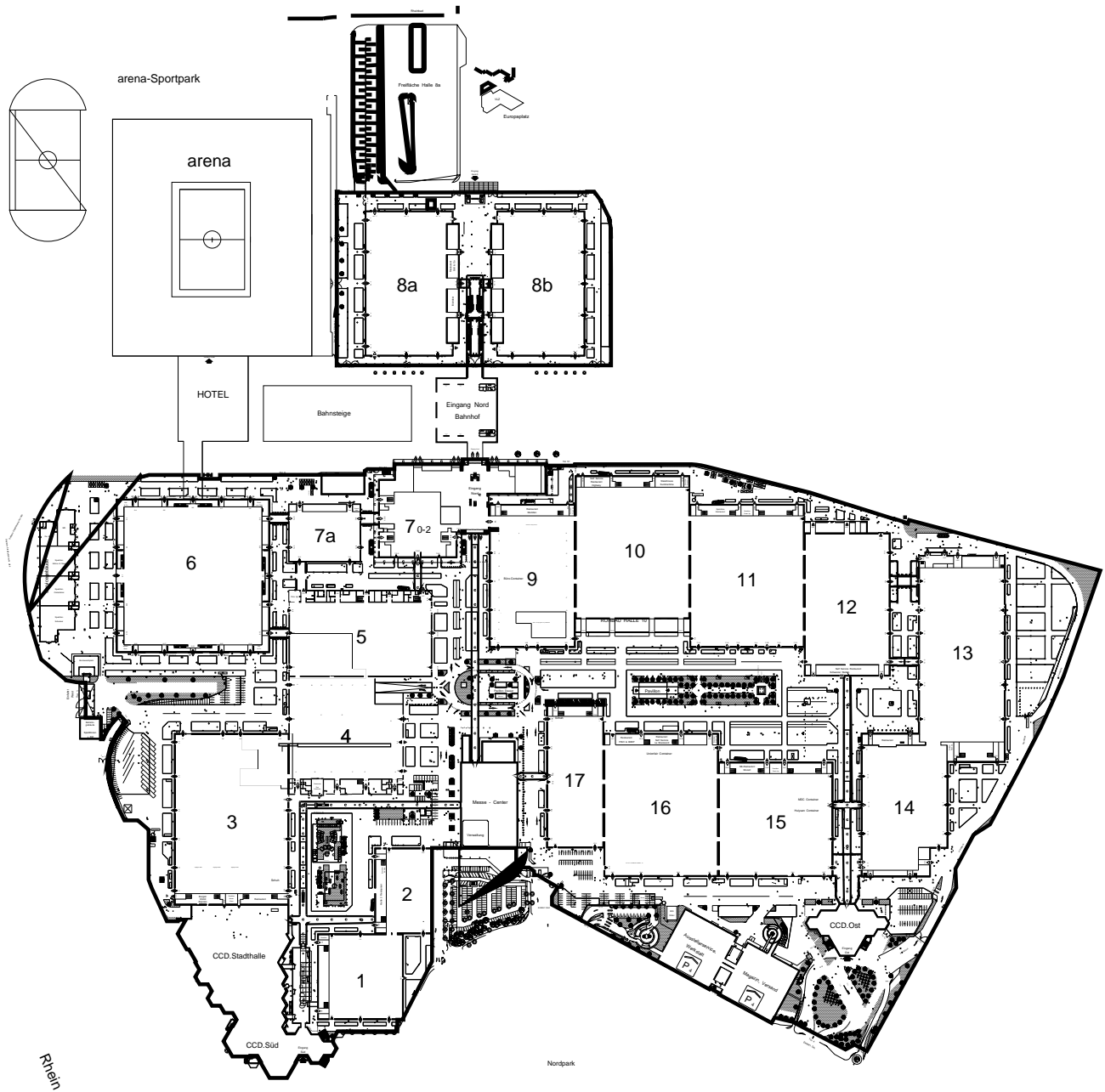


# gds118 Hall FG



## gds118 Exhibitor List Hall FG [1/1]

Stand	Name	Stand	Name	Stand	Name
- FM 58	Jonas Povel	- HM 43	Futile Donka Mishineva	-HM 23	Yoni van Oorsouw
- FM 63	Badra Mustapha	- HM 44	ADAMA Soiree	-HM 24	La Loria -Shoe Accessoires
- FM 64	Crea Boutik	- HM 45	MONICK CREATIONS	-HM 27	22 Fashion Agency
- FM 66	Cle Design	- HM 46	Lou Saddlery Ledermanufaktur	-HM 28	BLOMMAERT MONGULU
- FM 68	Scratchwear	- HM 47	VE&TO Concept Tomislav Blazevic	-HM 29	Post Footwear Aps
- FM 69	PANTHERA Noble Interiors	- HM 48	M + B HDL GmbH	-HM 3	Alberta di Alberta Bazzolo
- FM 70	Little India	- HM 7	Ludewig & Seewald oHG	-HM 30	Bonds Footwear Sandale D´Azur
- FM 71	Andreo-Design	-FM 52	SWANE - DESIGN	-HM 36	b. Luxe GmbH
- HM 10	CAP Ulrike Broermann	-FM 53	Mama Afrika Martina Zenker	-HM 37	b. Luxe GmbH
- HM 11	Ellen Paulssen Hüte e.K.	-FM 54	Boyko Christoph	-HM 4	2Side
- HM 12	Cold Cocained Heart	-FM 55	JASMIN KRIMP	-HM 5	YUTA PASCH Design GmbH
- HM 13	Geschmeidig	-FM 56	Pia Heise	-HM 6	Nero Handels GmbH
- HM 14	Bencen - Hutdesign Inh. Benjamin Rehm	-FM 57	Retro Star		
- HM 16	Schuh Bertl	-FM 59	Rolf Buck Vaseline		
- HM 17	Chompas / Askibags	-FM 60	Raphael Höpfner		
- HM 25	Pio GmbH	-FM 61	Tierra Negra		
- HM 26	Gundi Blind	-FM 62	Stölzer Marcus		
- HM 31	Longtime Vertrieb Ralf Ebkemeier	-FM 65	Henni Kunde		
- HM 32	KICKSTICKZ UG (haftungsbeschränkt)	-FM 67	Scratchwear		
- HM 33	Aruddi, Anke	-HM 1	Panorama Europe GmbH		
- HM 34	YoVoy Dessy	-HM 15	N.E.O.N. Distribution UG Mr. Lacy		
- HM 35	Sabine Weyhe	-HM 18	APICCAPS - Associacao Portuguesa dos Industriais do Calcado Componentes Artigos		
- HM 38	Spinach Mafia Serendipity Jewellery	-HM 19	APICCAPS - Associacao Portuguesa dos Industriais do Calcado Componentes Artigos		
- HM 39	Matke Inh. Kerstin Matke	-HM 2	Sanita Footwear A/S		
- HM 40	Berliner Miedermanufaktur	-HM 20	APICCAPS - Associacao Portuguesa dos Industriais do Calcado Componentes Artigos		
- HM 41	Kaiser Friedrich Herrenhemden Palto Modedesign GmbH	-HM 21	APICCAPS - Associacao Portuguesa dos Industriais do Calcado Componentes Artigos		
- HM 42	Photocouture Claudia Bokmeier	-HM 22	Tessa Groenewoud Shoes		